

COVERAGE

Car parc	263.8 million vehicles	100%
NTK	88%	
Competitor 1	75%	
Competitor 2	59%	
Competitor 3	56%	
Competitor 4	46%	
Competitor 5	14%	

Source: TecDoc (referring to Europe, Maghreb, Russia and Turkey)



PREMIUM QUALITY

- » Testing brought to extremes: **thermal shock test** from -25 to 135°C
- » **OE-style accessories** (brackets, spacers and weather-tight connectors)
- » Re-engineered sensors **for longer lifetime than OE**
- » Exact alignment, positioning and spacing for faster and easier installation
- » Sensors are **properly sealed** to prevent environmental corrosion, performance issues and leaks, resulting in a long product life



A ONE-STOP SHOP FOR NTK SENSORS

- // Engine Speed & Position Sensors
- // Oxygen Sensors
- // NOx Sensors
- // Exhaust Gas Temperature Sensors (EGTS)
- // MAP/MAF Sensors



With comprehensive coverage and total convenience from the **world's no.1 sensor specialist**.



NGK SPARK PLUG EUROPE GmbH
Harkortstraße 41 // 40880 Ratingen // Germany
www.ngkntk.com

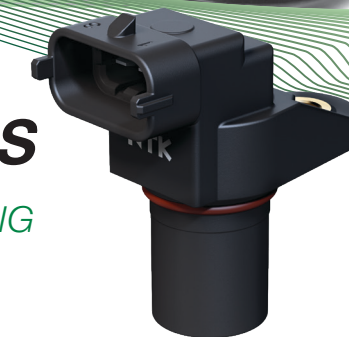


ENGINE SPEED & POSITION SENSORS

// BECAUSE TIMING IS EVERYTHING



VEHICLE
ELECTRONICS



FUNCTION PRINCIPLES

In modern engines, exact timing of fuel injection and ignition is essential for efficient engine operation. **Engine Speed & Position Sensors** play a crucial role in this process.

They provide the engine's ECU with the most important information needed to **ensure optimum engine performance**: the speed of rotative parts (e.g. crankshaft, camshaft) and their position in order for the ECU to calculate the perfect injection and ignition timing.

The all-new NTK Engine Speed & Position Sensors perfectly fulfill these requirements: To ensure **highest precision and reliability**, they transmit the appropriate and accurate signal to the ECU at exactly the right moment, thus allowing the engine to deliver optimum performance.

PRODUCT RANGE

- » **567** part numbers offering the best market coverage from premium brands
- » **88%** market coverage (source: TecDoc)
- » Around **270 million** cars covered in Europe
- » Gasoline and diesel applications
- » Comprehensive and useful part numbering system facilitating the choice of the appropriate product
- » Smart package, products well protected



PACKAGING

SMART PACKAGE:

- » Eye-catching design for easy identification
- » Label across two faces for flexible stock management and easy scanning

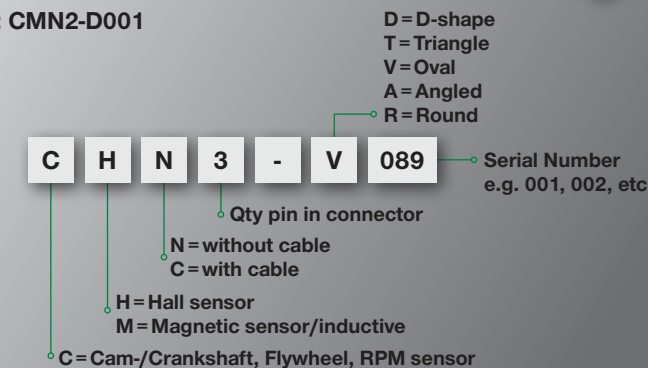
WELL PROTECTED:

- » Sensor protected with non-resealable plastic bag
- » Easy inspection



HOW TO READ OUR PART NUMBER

Example: **CMN2-D001**



TECHNICAL SUPPORT

- » Technical video available on YouTube by scanning the QR code on the package
- » Dedicated technical trainings
- » Listed in major electronic catalogues (TecDoc, etc.)
- » New sensor catalogue for Engine Speed & Position Sensors in addition to separate catalogues for MAP/MAF, Oxygen and Exhaust Gas Temperature Sensors (EGTS)



DISCOVER MORE!

